

# DC-90

## Ultrasound System with X-Insight



# Insight. Intelligence. Innovation.

## Your priorities. Our mission.

In today's fast-paced and demanding hospital environment, clinicians are challenged to identify high-risk patients efficiently, track disease progression quantifiably, and make informed decisions to optimize treatment efficacy throughout the care continuum. To address these evolving needs and support our vision of better healthcare for all, Mindray continues to develop innovative solutions that streamline workflow, and align with the financial goals of a broader range of institutions.

The DC-90 Ultrasound System with X-Insight focuses on clinician requirements, such as providing a more comprehensive and dedicated solution to ultrasound imaging and improving product usability to enhance diagnostic confidence. Based on an insightful look into customer needs, the DC-90 System is designed to deliver high efficiency and dynamic performance, with intelligent, precise, and clear imaging. Through innovative solutions like the DC-90 System, Mindray is committed to putting healthcare within reach.



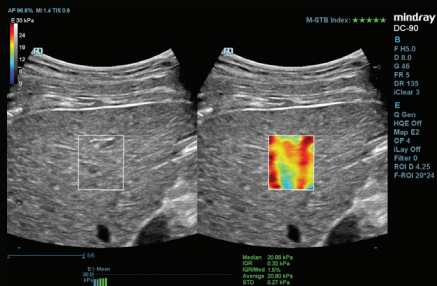
# eXceptional Intelligence

## High efficiency with precision imaging

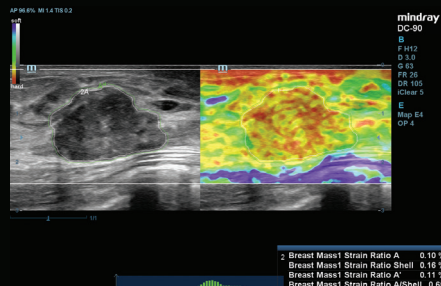
The DC-90 Ultrasound System delivers outstanding performance with advanced capabilities for addressing your diagnostic requirements across a wide range of applications. This System includes Sound Touch Elastography (STE), Ultra-Wideband Non-Linear (UWN<sup>+</sup>) contrast enhanced ultrasound (CEUS), complete quantitative tools for vascular perfusion analysis, and Artificial Intelligence (AI) tools such as Smart Plane CNS.



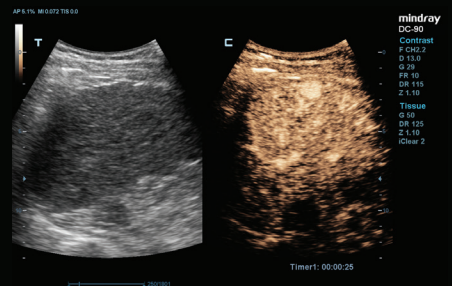
# Radiology Solutions



Sound Touch Elastography



Natural Touch Elastography

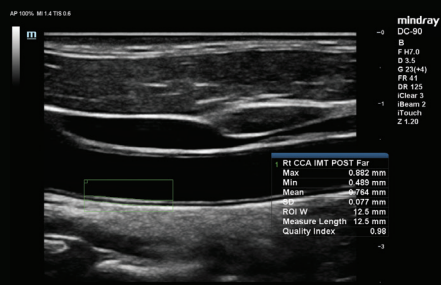


UWN+ CEUS

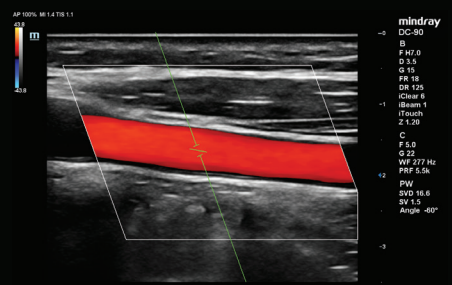
# Vascular Solutions



iWorks™ Protocols

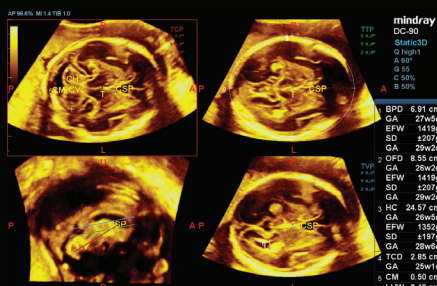


Auto IMT

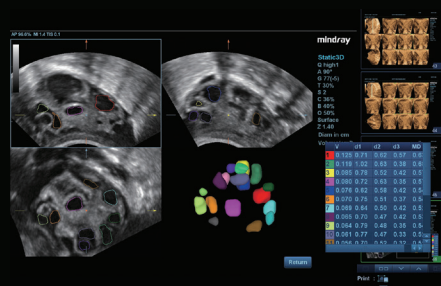


Smart Track

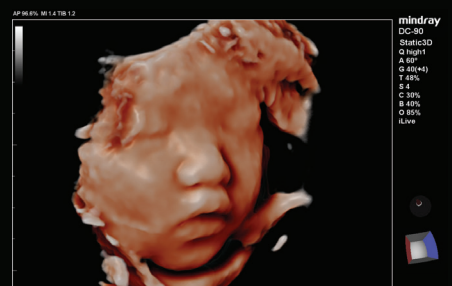
# Women's Health Solutions



Smart Planes CNS



Smart FLC



Smart Face

# eXceeding Expectations

## Innovation inspired by evolving clinical needs

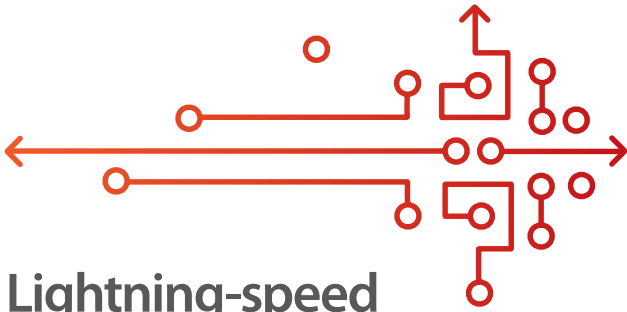
The DC-90 with X-Insight focuses on what matters to you and refines your user experience by providing clarity, flexibility, and intuitive technologies that exceed your expectations.

## Designed to maximize clinician productivity and enhance user experience

- 1 21.5" standard LED monitor provides superior contrast resolution and improved visualization
- 2 Unique dual-wing floating arm maximizes viewing capabilities with advanced articulation
- 3 Ultra-slim multi-gesture touchscreen for exceptional usability and utility
- 4 Built-in battery for up to 75 minutes of continuous scanning and increased portability options
- 5 Five active transducer ports to maximize workflow

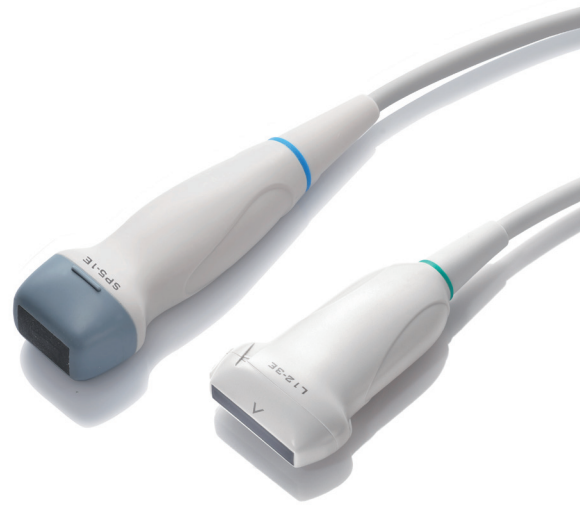


# eXpress Clarity



## Lightning-speed imaging powered by X-Engine

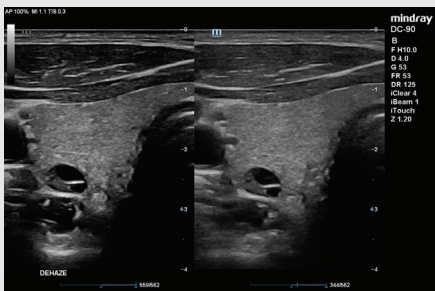
The new X-Engine integrated with both GPU and CPU enables multi-core parallel processing for fast frame rates and superb clarity.



## Touch and Go with leading-edge transducers

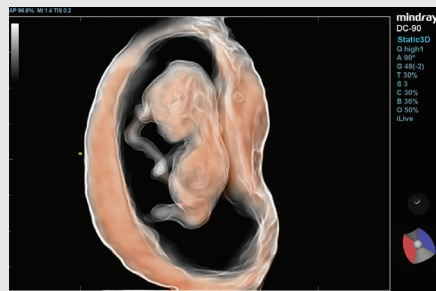
Single Crystal, 3T™, and ComboWave technologies combine to enable better penetration, higher resolution, and increased image uniformity.

## Superb visualization by innovative image algorithms



### Dehaze

Proprietary technology that suppresses noise and reduces interference with no loss of diagnostic information.



### iLive with Hyaline

New rendering method that dynamically applies transparency to rendered structures for a more comprehensive view of anatomy.



### Echo Boost™

Better contrast and homogeneity for visualization of myocardial tissue layers.

# eXtraordinary Value

## Industry's Best Investment Protection and Total Cost of Ownership

### Living Technology™

Living Technology is a continually evolving software-based approach to providing our customers with easily upgradeable enhancements made possible by our core imaging technologies. These upgrades secure product investment protection by ensuring that Mindray Ultrasound Systems remain at the cutting-edge of imaging performance excellence throughout their entire life cycle.

### Standard five year warranty\* includes:

- Replacement parts (normal wear and failure), including cart, scan module, and standard transducers
- On-site labor for cart-related repairs
- Ongoing state-of-the-art ultrasound performance with software updates\*\*

\* Standard five year warranty is available for systems purchased directly from Mindray North America. Warranties for systems purchased from Mindray authorized agents can vary.

\*\* Upgrades, such as new application packages and hardware, are optional purchases.



#### Mindray North America

800 MacArthur Blvd., Mahwah, NJ 07430

Tel: 800.288.2121 Support: 877.913.9663 Fax: 800.926.4275 [www.mindray.com](http://www.mindray.com)

Mindray® is a registered trademark of Shenzhen Mindray Bio-Medical Electronics Co., Ltd. All brands and product names are trademarks of their respective owners. ©2019 Mindray DS USA, Inc. Subject to change. 11/19 P/N: 0002-08-40422 Rev B

**mindray**

healthcare within reach