

# ZS3

## Ultrasound System

Diamond Edition 2.0



# Taking Ultrasound to New Depths

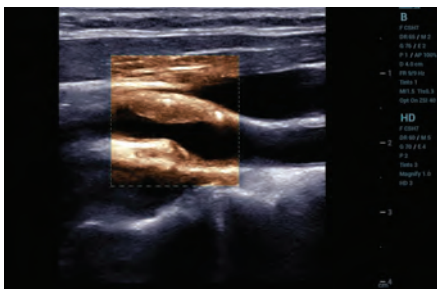
With a diverse patient population, clinicians need an ultrasound system that can keep pace with the evolving demands of the every day. The ZS3 Ultrasound System Diamond Edition 2.0 encompasses the advanced ultrasound capabilities you rely on in a small, compact design that is easy to move.

Based on Mindray's pioneering architecture, the ZS3 System provides new image-enhancing technologies that reduce artifact and signal noise, producing clear, uniform, and detailed images. A wide variety of advanced technologies come together to provide clinical confidence when you need it most, and a streamlined workflow helps make a full day of scanning intuitive and comfortable.



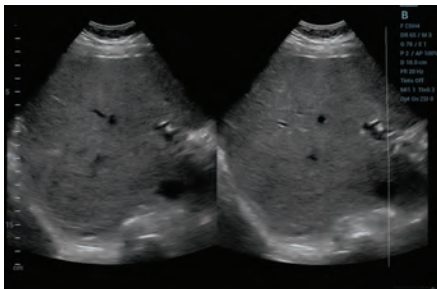
# Clarity You'll Notice

Powered by our industry-leading virtual beamformer and image processing technology, ZONE Sonography® Technology+ (ZST+) allows the acquisition and processing of large zones of data 10 times faster than traditional architectures. This provides uniform and detailed high-resolution images with reduced motion artifact and a precise display of hemodynamics.



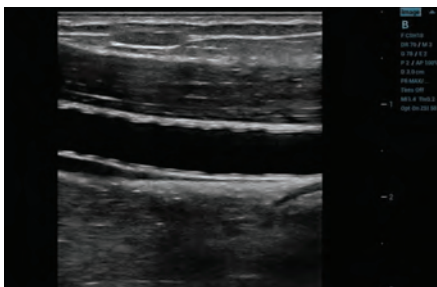
Carotid plaque with HD Scope

**HD Scope**, a proprietary Mindray technology, enhances B-mode tissue characterization and improves spatial and contrast resolution in a specific region of interest.



Dense liver with Sound Speed Compensation

**Sound Speed Compensation** automatically detects and analyzes different tissue characteristics to determine optimal signal speed needed for improved image quality. This unique, one-touch, intelligent algorithm improves lateral, spatial, and contrast resolution as well as imaging at depth.



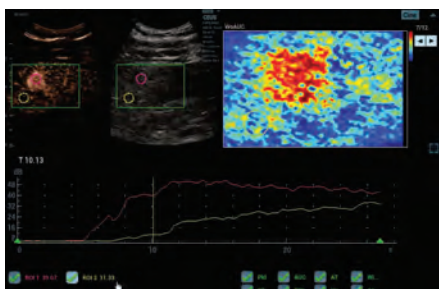
Femoral artery polypropylene mesh with Synthetic Spatial Compounding

**Synthetic Spatial Compounding** improves contrast resolution and reduces shadowing artifact by selectively spatially filtering the collection of non-steered transmit beams to sustain high frame rates and image clarity.



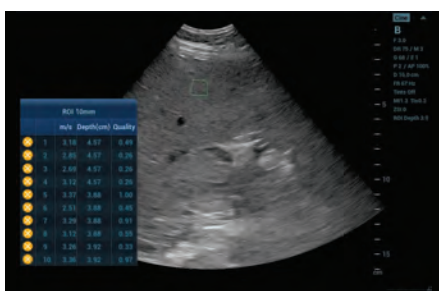
# Enhancing Clinical Confidence

Timely answers and exceptional patient care are more important now than ever before. The ZS3 System's advanced capabilities, like Contrast Enhanced Ultrasound (CEUS) and Elastography tools, may provide additional information needed for confident decision making.



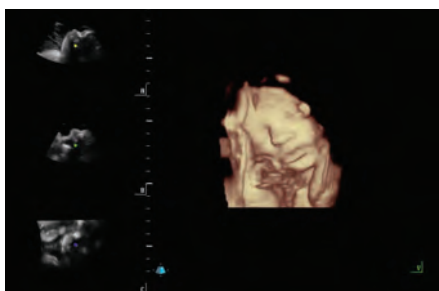
QI analysis of CEUS image

Whether for research or everyday practice, we have a suite of transducers available and robust **contrast enhanced ultrasound (CEUS)** tools to fit your needs. Our unique approach helps improve bubble longevity and reference image clarity. Quantitative analysis tools provide the data you need for a confident and thorough assessment.



Quantitative Elastography of the liver

Mindray's suite of **Elastography** technologies provides non-invasive options to assess tissue stiffness. Strain or ARFI Quantitative Elastography provide the documentation support for confident decision making.



Volume image of fetal face

**Volume Imaging** provides additional information and a different anatomical perspective. Advanced lighting and multiple post-processing modes enhance understanding and communication.

# Optimized Workflow

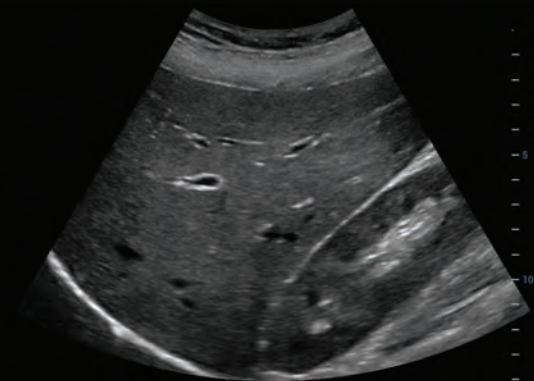
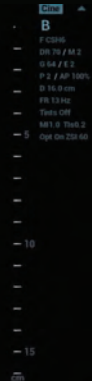
An intuitive and easy-to-use interface streamlines workflows, helps reduce keystrokes, and improves exam efficiency.

- 1 Protocols**  
Powerful, customizable tool used to bring standardization to the ultrasound exam; helps reduce keystrokes and increase exam efficiency.
- 2 Z-Tracking™**  
Industry-first transducer tracking technology attaches each transducer used during an exam to the patient's medical record.
- 3 Total Recall Imaging**  
Helps reduce patient call backs for repeat scans by offering broad capabilities for post-processing cine clips and images from the system's archive.
- 4 Long Battery Life**  
Take the system on the go! Backup battery pack allows up to 1.5 hours of normal use without plugging in.

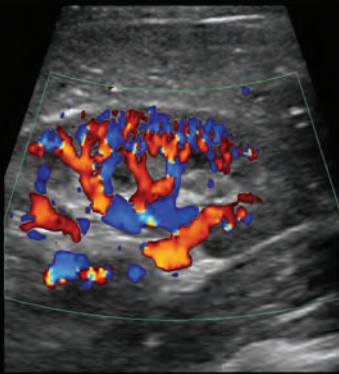




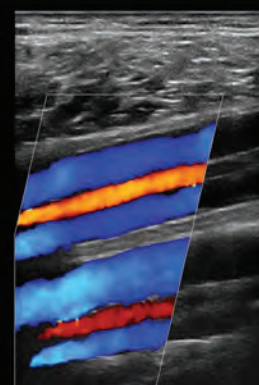
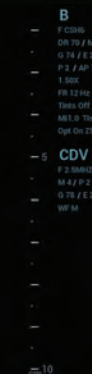
Right lobe of the liver



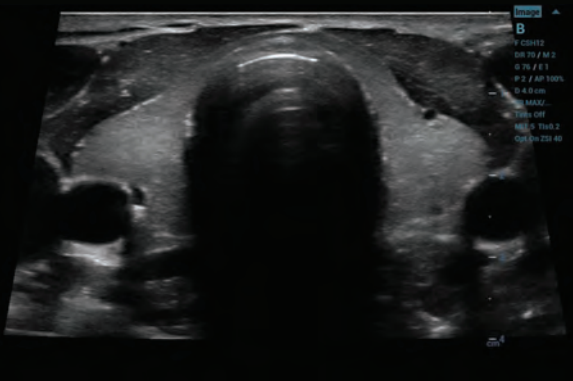
Hepatorenal recess



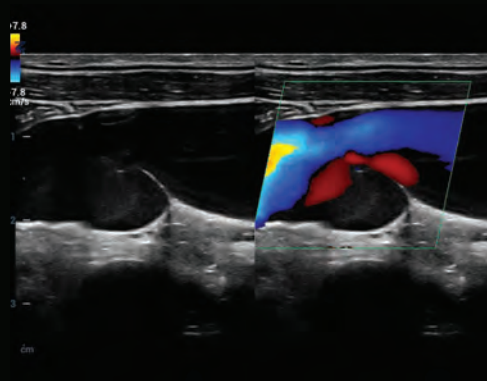
Renal perfusion



Peroneal and tibial vessels



Thyroid gland



Jugular vein valve



# Always With You

## Industry-Leading Peace of Mind

We are so confident that our ultrasound products will perform reliably for years to come, that we offer a five year warranty, standard, at no additional cost.

- Replacement parts (normal wear and failure), including cart, scan module, and standard transducers
- On-site labor for cart-related repairs
- Ongoing state-of-the-art ultrasound performance with software enhancements\*\*

\* Standard five year warranty is available for systems purchased directly from Mindray North America. Warranties for systems purchased from Mindray authorized agents can vary.

\*\* Upgrades, such as new application packages and hardware, are optional purchases.

## Living Technology™

Living Technology is a continually evolving software-based approach to providing our customers with easily upgradeable enhancements made possible by our core imaging technologies. These upgrades secure product investment protection by ensuring that Mindray Ultrasound Systems remain at the cutting-edge of imaging performance excellence throughout their entire life cycle.



### Mindray North America

800 MacArthur Blvd., Mahwah, NJ 07430

Tel: 800.288.2121 Support: 877.913.9663 Fax: 800.926.4275 [www.mindray.com](http://www.mindray.com)

Mindray® is a registered trademark of Shenzhen Mindray Bio-Medical Electronics Co., Ltd. All brands and product names are trademarks of their respective owners. ©2020 Mindray DS USA, Inc. Subject to change. 07/20 P/N: 0002-08-40457 Rev A

**mindray**

healthcare within reach